



Reditron

Paxton

ACCESS CONTROL SYSTEMS **PRODUCT GUIDE 2019-2020**

TRUSTED LEADERS
In total access control solutions





How Does Net2 Work?

Networked Access Control

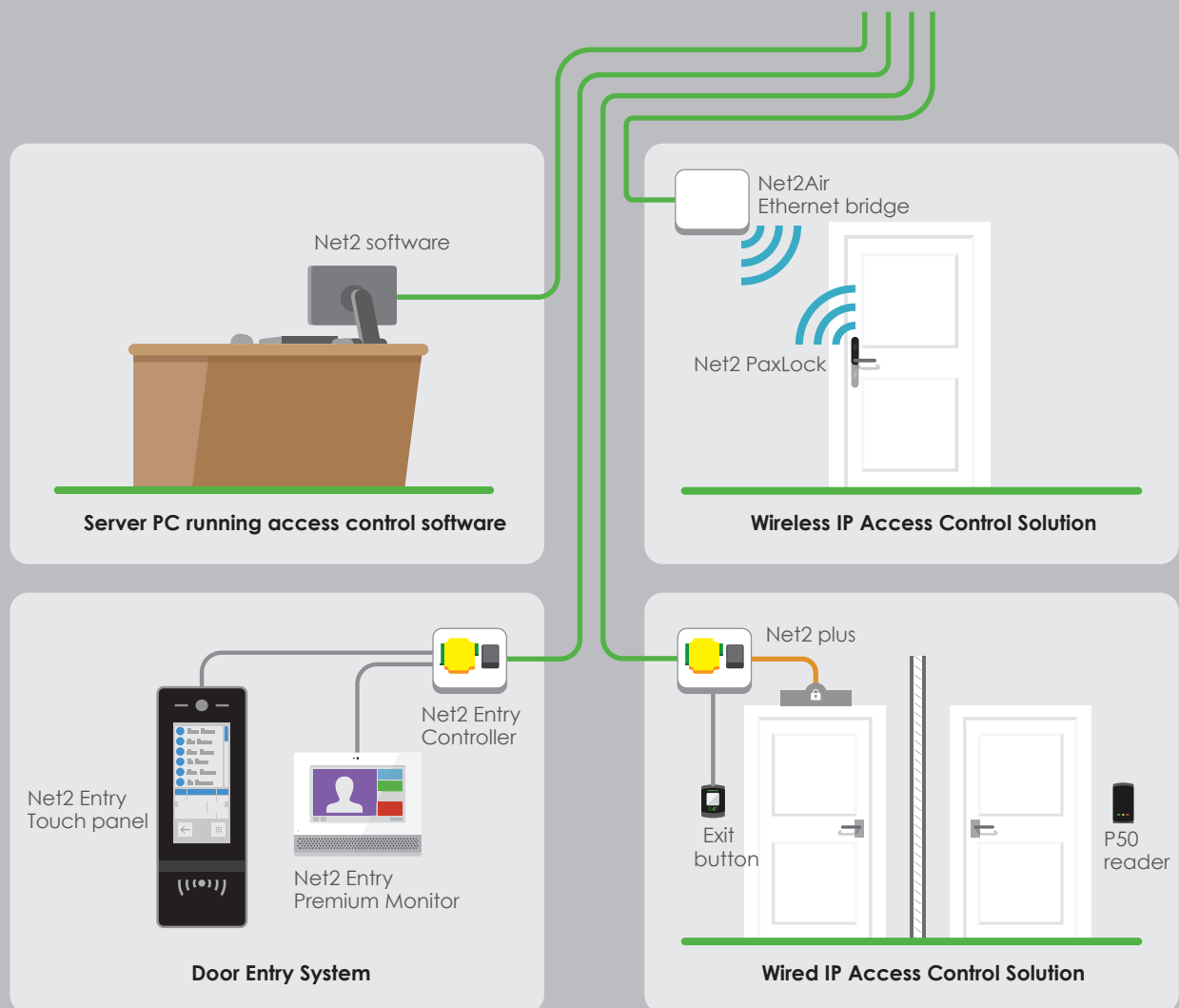
Our networked access control system, Net2, is administered using one or more PCs and can be monitored and managed from a central location. Our door controllers come as wired, wireless or battery powered.

Net2 is designed with simplicity in mind and is easily scalable. Paxton's one door controller philosophy means you only quote for doors that require access. You can build your Net2 system one door at a time using wired and wireless controllers and door entry for versatile security and building management.

Benefits of the Net2 system:

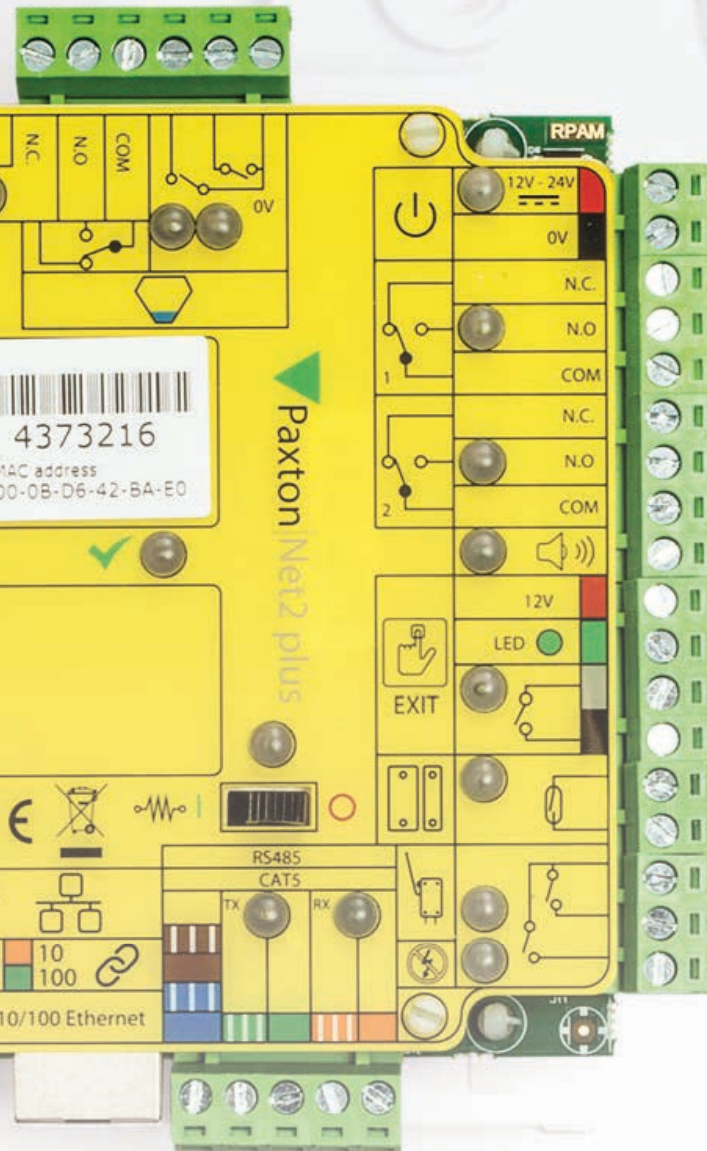
- Modular approach for simplicity and scalability
- Simple, intuitive software
- Range of features that move beyond basic access control
- A complete solution that encompasses wireless and door entry

Example of a Net2 system:



Door Controllers

All Net2 door controllers can be used alongside each other, making it easy for installers to find the best solution for each individual site.



Net2 plus door controller

Net2 plus is Paxton's most powerful door controller, which uses TCP/IP technology to allow direct connection to the IP network, saving time with minimal wiring needed.

- Use existing LAN or RS485 infrastructure on a site
- Easy installation with minimal wiring
- Future proof and easily scalable



Net2 plus door controller with PoE

Power over Ethernet (PoE) is a technology that allows both power and data to be streamed along the same Ethernet cable. Net2 plus with PoE as a power source makes installations quick and easy.

- Enjoy all the benefits of Net2 plus, with a single cable for power and data
- Choose to use mains or PoE
- Installation is more efficient and convenient
- Save time and money on extra cabling



Net2 nano door controller

Net2 nano is a wireless door controller, using secure wireless technology to communicate to the server PC.

- Communicates using Net2Air technology, Paxton's secure and reliable wireless protocol
- Minimal wiring needed
- Easy installation and configuration



VR Reader

The vandal proof reader is for use with Switch2 and Net2 systems. The barrel-like construction of the reader means that it can be buried in a wall. This means that it is ideal for use in vandal prone areas where malicious damage could be a problem.

LK263 - 4



The P series range of readers is Paxton's most popular and comprises four readers ranging in size from the P38 to the P200. A P38 fits neatly onto a door frame while the size of the P200 creates a longer token read range. All P series readers are supplied with two fascias, one black and one white. We supply free fascia replacements to keep your sites looking smart.

P38

LK260

P50

LK260 -1

P75

LK260 -2

P200

LK260 -3

K / KP series

KP readers are a keypad and a proximity reader all in one. This allows card plus Pin access control with a single reader.



K50

LK261-5

K75

LK261-6

KP50

LK261-2

KP75

LK261

Request to exit button

KP readers are a keypad and a proximity reader all in one. This allows card plus Pin access control with a single reader.



E50

LK269 -1

E75

LK269 - 3

Long range reader

The Long range reader is designed for hands free access, its read range of 5m means that the token can be detected from within a vehicle, for car parks, barriers and wheel chair user access.



Keycard

Keyfob

Long Range Reader
LK266

Handsfree Keyfob
LK272

Handsfree Keycard
LK273

Energy saving reader

The Energy saving reader is used to ensure that electrical equipment is only switched on when an authorised user card is inserted and retained, ideal for energy saving and safety.



LK268

Desktop reader

The desktop reader is designed to sit next to the PC. It is used for adding tokens to a Net2 system. It can also be used for identifying lost tokens. Both proximity and magstripe versions are available.



LK267

Reader port connector

The RJ45 reader port connectors are designed to make wiring readers to our control units quick and easy.



LK269 - 2



NEW Net2Air bridge

The Net2Air Ethernet bridge provides the wireless communication link between the PC running Net2 software and wireless control units.

LK254 - 1



NEW PaxLock Pro

Available in black and white, with an anti-scratch fascia to maintain a high quality look and feel PaxLock Pro is suitable for internal and external facing doors making it applicable for more sites than ever before.



White Indoor
LK284

White Outdoor
LK284 - 2

Black Indoor
LK284 - 1

Black Outdoor
LK284 - 3

HID LICENSE CARD

Select models now have functionality to read HID™ 125kHz Proximity or HID™ Wiegand tokens, when enabled using Genuine HID Technology™ 125kHz. Proximity activation licence cards or Wiegand activation licence cards, sold separately.



LK271-3

Net2 Entry monitor

Smart and simple design with colour touchscreen. Can be used via handset for private calls or in hands free mode.

Monitor
LK280 - 2

Desk Stand
LK280 - 7



Net2 Entry Premium monitor

NEW

Free concierge management and several personalisation options available with built in themes.

Monitor
LK280 - 20

Monitor With Handset
LK280 - 21

Desk Stand
LK280 - 27



Net2 Entry controller

Conduit between the monitor and the panel in the system.

LK280 - 3



Net2 Entry panels

Net2 Entry Standard panel



The anthracite grey standard panel suits a range of environments with its simple and IK08 rated robust design.

SM
LK279 - 1

FM
LK280 - 17

RH
LK279

Net2 Entry Vandal Resistant panel



IK10 impact rated - made from marine grade stainless steel to meet the most demanding environments.

SM
LK279 - 2

FM
LK280 - 14

RH
LK279 - 3

Net2 Entry Touch panel



Capacitive 7-inch colour touch screen with customisable options and two way camera when used with the Net2 Entry Premium monitor.

SM
LK279 - 6

FM
LK279 - 8

RH
LK279 - 7

SM= Surface Mount FM= Flush Mount RH= Rain Hood

NEW

Software Overview

There are two versions of the Software:

Net2 Lite, which is ideal for most sites and is free of charge; and Net2 Pro, which offers extra features for more flexible and advanced access control. Developed to be straightforward and intuitive the Net2 software is very easy to learn for both you and your customers.

Feature

Net2 Lite

Net2 Pro

Multiple clients

•

•

Free upgrades

•

•

CCTV integration

•

•

Site graphics

•

•

Triggers and actions

•

•

Intruder alarm integration *

•

•

Net2 Entry compatible

•

•

Biometric integration

•

•

Landlord Tenant

-

•

Timesheet & Timeline *

-

•

Card designer

-

•

Roll call and muster reporting *

-

•

Fire alarm integration *

-

•

Anti-passback *

-

•

Security lockdown *

-

•

Multi-zone intruder alarm integration *

-

•

Custom days *

-

•

Areas

-

•

Customisable welcome page

-

•

Paxton Connect Admin **

-

•

Paxton Connect Admin

NEW

Site management made easy

Provide easy and flexible site management for Net2 System Engineers and Net2 Operators. Manage multiple sites remotely from a smartphone.

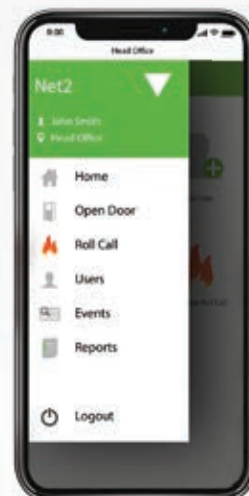
Features include:

- User admin
- Managing roll call reports
- Open door functionality
- Viewing reports and events

Download now:



Find out more: paxton.info/3430



* Not available with wireless products

** Paxton Connect Admin app only works with Net2 Pro v6.00 or above



Software Features

Tailor access privileges to groups or individuals quickly and easily using our intuitive, user-friendly software. Event reports can be generated in a few clicks and the advanced features such as site graphics, IP camera integration and triggers and actions further extend the capabilities of the system.

COMPATIBILITY

Net2 software is compatible with Windows 8, Windows 7 or Vista operating systems and is designed to feel familiar to any Windows user.



Free upgrades

Software upgrades are always free of charge, allowing system users to benefit from new features as they become available



Unlimited client workstations

Net2 software does not restrict the number of operators who can have access and it can be installed free of charge on multiple PCs



Multiple operator levels

An unlimited number of people can administer the system with different levels of security applied



Live events

View events in real time
Full event logging - review historical events



Reporting

Pre-defined reports allow you to review the most relevant data quickly

Build custom reports based on individuals, departments or doors



Open door function

Utilise the software to open individual doors or groups of doors from a client workstation



Site graphics

Import 2D images of your site to give a graphical view of door open or alarm status for operators or security personnel



Triggers & actions

Administrators can easily create rules based on system events. These include sending emails and SMS, controlling doors and relays in response to access events or alarms



User image verification

This enables the system administrator to visually confirm the identity of the user



Custom days

Custom days offers organisations flexibility allowing users to create a time period in the Net2 software for special events and occasions. This is useful when organising events such as school open days, or extended store opening hours



Temporary access rights

Temporary access permissions can be used to automatically upgrade or downgrade a user's access permissions for a set period of time



Turnstile mode

Control bi-directional turnstiles with a single door controller saving wiring time and hardware expense





Timesheet & timeline

By allocating specific Proximity readers for clocking in and out you can use Net2 to log the working hours of employees. You can also note periods of time out of the office for reasons such as vacation, appointments and unpaid leave, etc. Reports can also be exported for use with HR applications



Card designer

Personalise access control tokens with employee pictures, details and company information



PRO Landlord Tenant / Advanced operator permissions

Operators using Net2 software can be managed in various ways to limit access and enhance security. With Landlord Tenant / Advanced operator permissions it is possible to restrict operators to only administer users within certain departments and apply specific access level permissions to those users



PRO Roll call & muster reporting

Roll call allows the system administrator to obtain a report listing all users currently within a specified area. This is primarily used in the event of an emergency, such as a fire alarm, when it can be used to check that everyone is out of the building



PRO Areas

Areas and area groups make it easier to set up access levels on larger sites by grouping multiple doors into a single access controlled area. It also allows the use of advanced features such as anti-passback



PRO Anti-passback

The main purpose of an anti-passback system is to prevent a user from passing their token back to a second person to gain entry into the same controlled area; for example, a car park



PRO Who is in?

Displays the last known location of a user based on the last reader they presented a token to



PRO Security lockdown

Security lockdown is ideal for buildings or sensitive sites that need to secure the premises in the event of an emergency, allowing only specific security personnel free movement during lockdown



PRO Customisable welcome page

Installers can customise the welcome screen of every Net2 system they install or maintain with their logo and contact details. This ensures that the customer knows who to contact if they need support

RELIABLE, HIGH QUALITY ACCESS CONTROL SYSTEMS

Smart • Simple

5
Year
Warranty
ON PAXTON PRODUCTS

AVAILABLE
AT REDITRON

