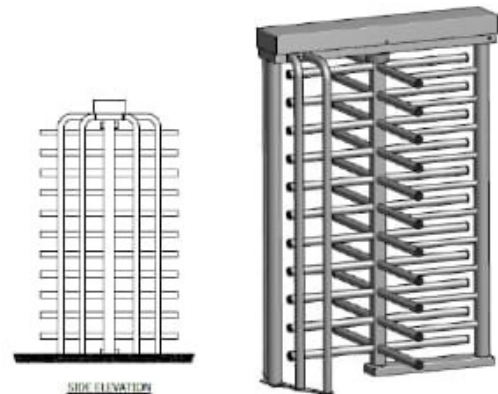
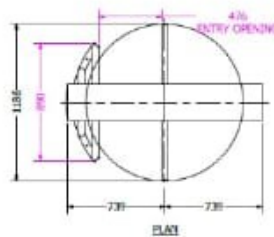
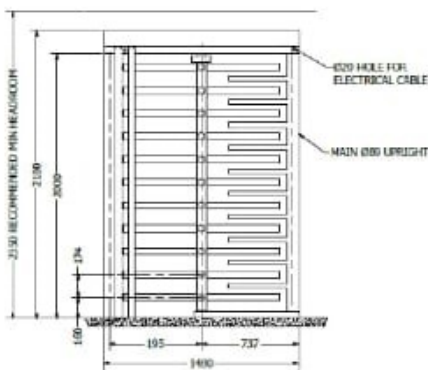


Full Height Turnstile

FHTSA2400

The FHTSA2400 Heavy Duty Full Height Single 4 Arm Turnstile is designed for robust security and reliable access control. This turnstile features a heavy-duty construction, making it ideal for high-traffic areas and environments requiring enhanced security measures. Ideal for Industrial facilities, corporate and government security and Public transportation applications.



Specifications

Power Requirements	220V, 50/60Hz	Cabinet Material	Mild Steel Powder Coat Charcoal Grey
Working Temperature	-20°C/+45°C No Condensation	Barrier Material	Mild Steel Powder Coat Charcoal Grey
Working Humidity	0% to 85%	Barrier Movement	Rotating
Working Environment	Indoor/Outdoor	Emergency Mode	Supports
Speed of Throughput (10 Minutes)	Min. 50 - Max. 150 Number of Persons	Security Level	High
Net Weight (kg)	200 Kg	MCBF (Mean Cycle Between Failure)	1 000 000
Lane Width	500 mm	Ingress Protection Rating	IP65
Footprint (L*W)	1480*1186 mm	Warranty Information	10 Years Subject to conditions tendered
Dimensions (L*W*H)	1470*1186*2180 mm	Flow	Bi-directional
Dimensions with packaging (L*W*H)	1600*1100*2180 mm Crated		

To prevent the corrosion of stainless steel, we recommend not to use in highly corrosive environments, such as sea-side, chemical plants and saline-alkali soils.

