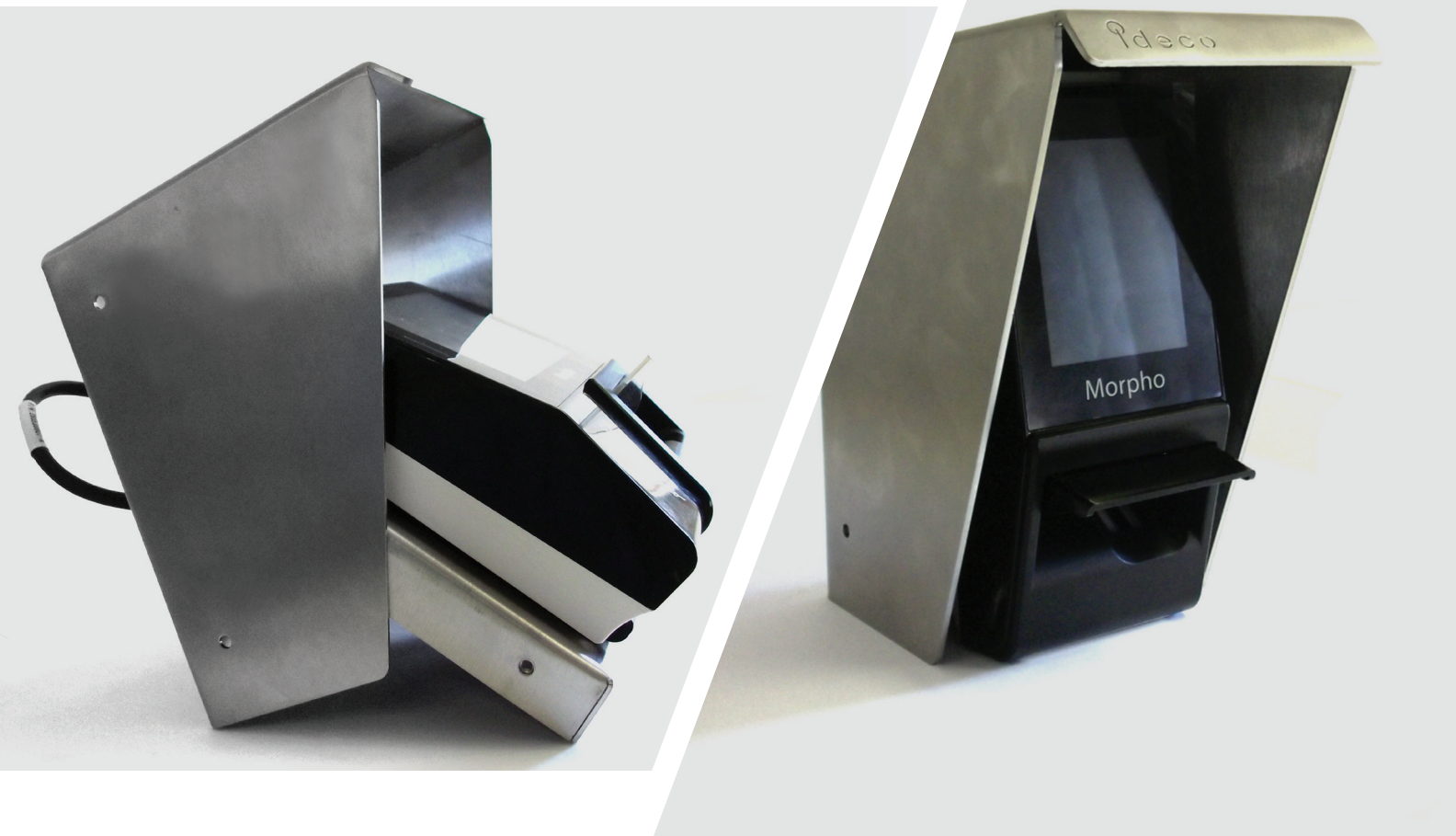


Sigma and Sigma Lite stainless steel housing



Stylish stainless steel housing to protect your Sigma biometric readers

- Shields against weather conditions
- Manufactured from strong stainless steel
- Durable and rust proof
- Stylish design
- Easy wall, gooseneck or turn-style mount
- Mounting insert plate:
 - provides space for connections and cables
 - simplifies installation and maintenance
 - protects network jack and cabling