



AX1500 Next-Gen Wi-Fi 6 Router


Next-Gen Wi-Fi For All



Archer AX1500

 Faster AX Wi-Fi
Speeds up to 1.5 Gbps[†]

 Ultra-Low Latency
by AX Tech[†]

 Connect More Devices
with OFDMA[†]

 Full Gigabit
Ports^Δ

Highlights

Wi-Fi 6 | 802.11 AX^E Future-Proof Your Wi-Fi

Improved Efficiency, More Connections

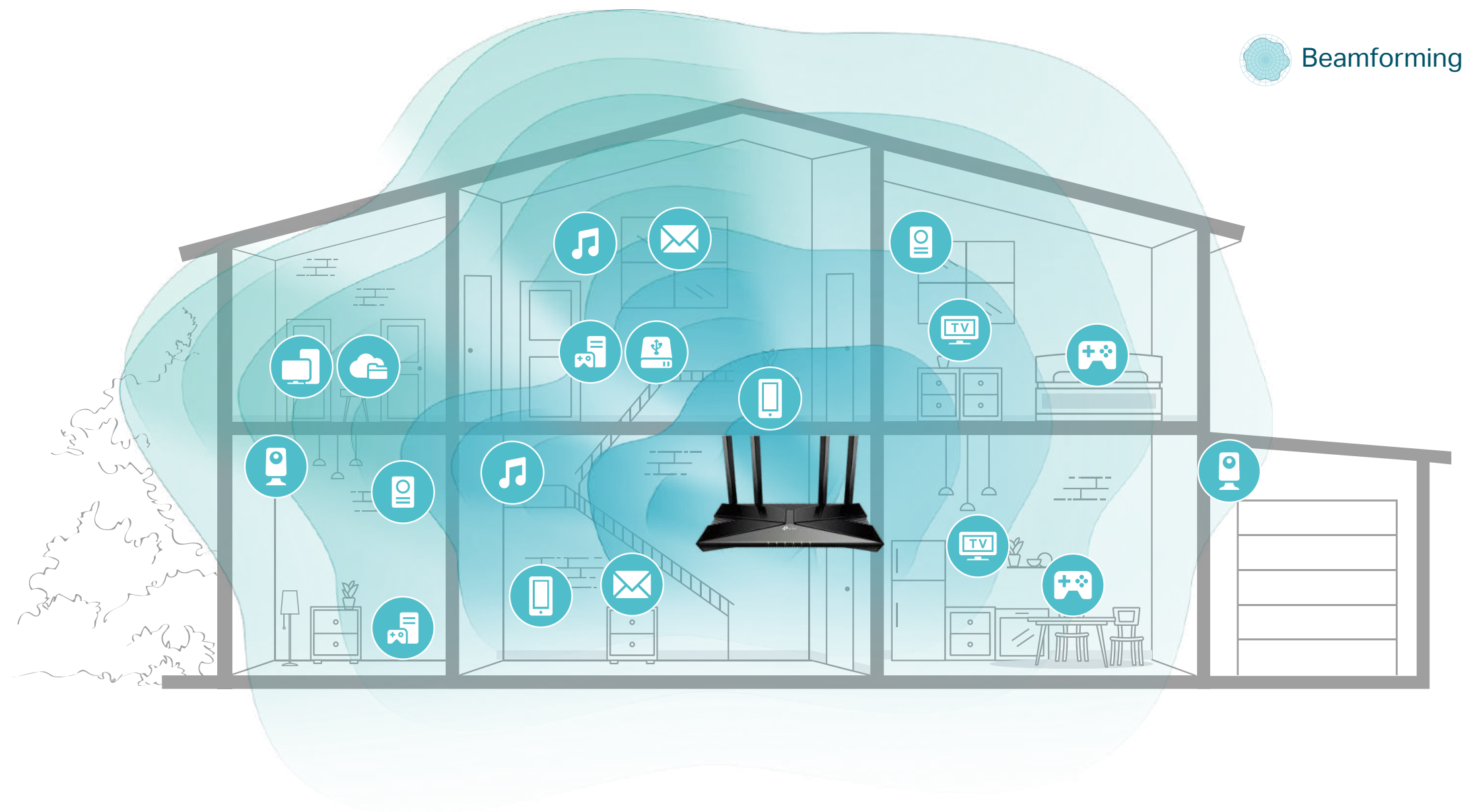
Add more Wi-Fi devices to your network without dragging the performance, as Archer AX1500 with Wi-Fi 6 builds a more efficient network that increases the average throughput by 4 times and serves more devices.[§]

Immersive Gaming, Smooth Streaming

Enjoy stable network for online gaming and live streams with flawless video and clear audio. OFDMA allows clients to transmit both on uplink and downlink using one band at one time, which cut the latency and ensures a responsive network.[‡]

Cover 3+ Rooms with Minimal Interference

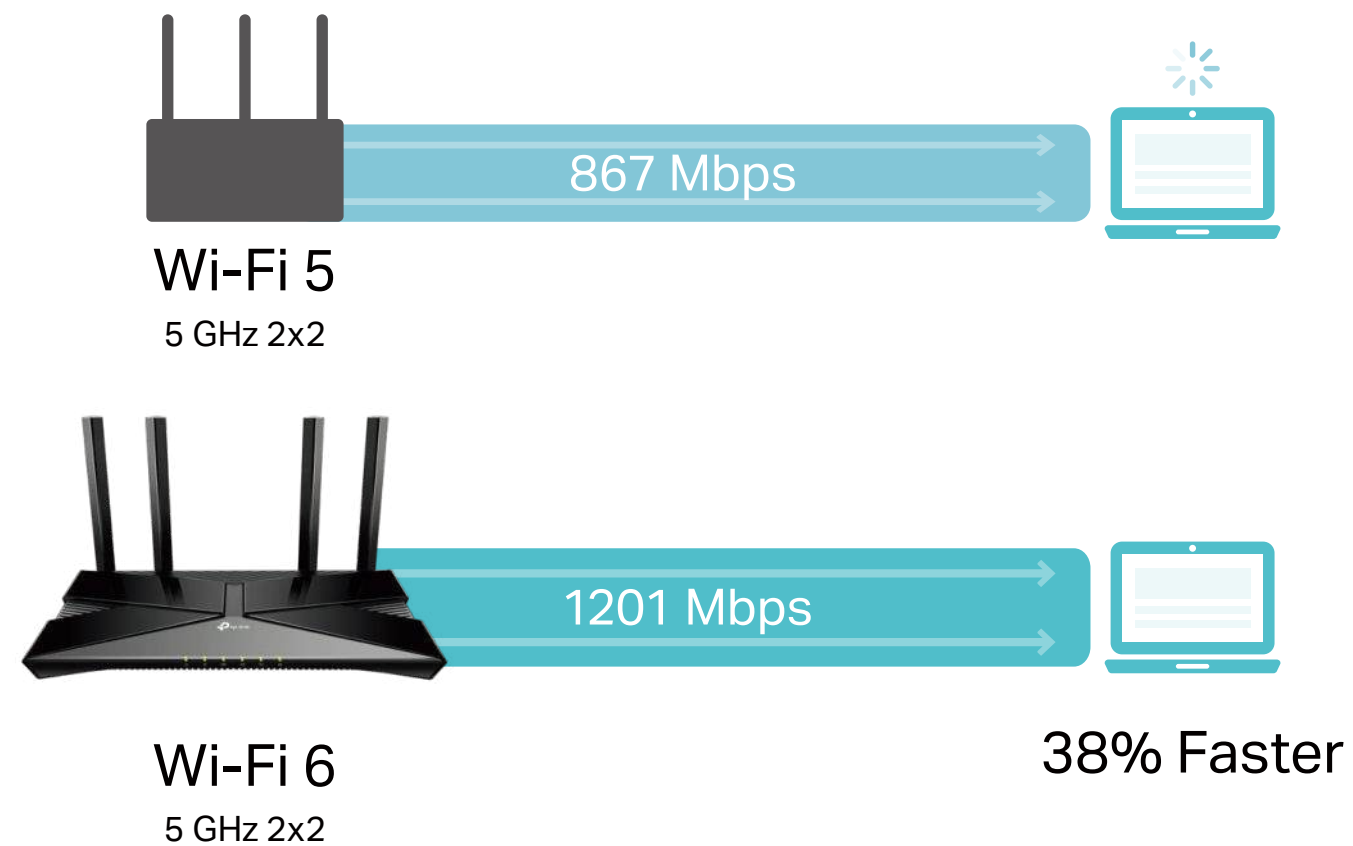
With clearer and stronger signal generated with Wi-Fi 6 and Beamforming technology, Archer AX1500 delivers data to devices far away by focusing less-interfered wireless signal towards them.



Highlights

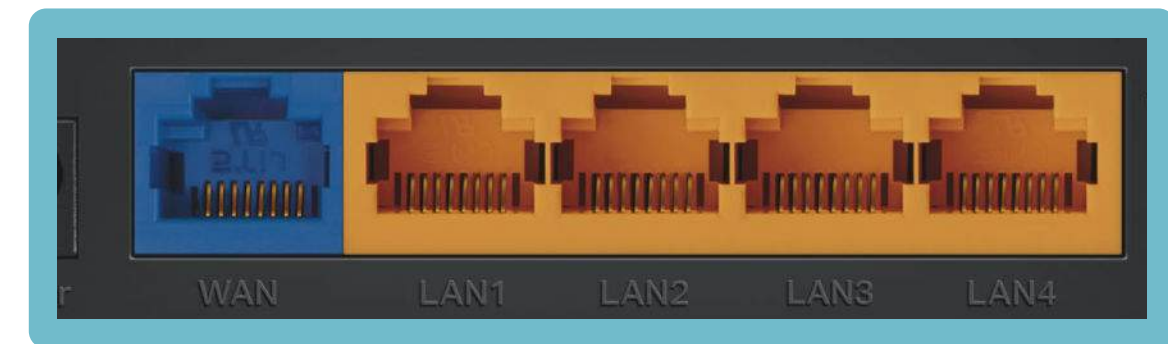
Faster Wireless Connection

4-Streams Wi-Fi offers connection at over 1 Gbps speed for newer mobile devices, reducing wait time by 30% while downloading huge files including 4K movies and games.*



Gigabit Internet Access

Take full advantage of your broadband with speed up to 1 Gbps with a Gigabit WAN port. Plug your PCs, smart TVs and game consoles into one of the four Gigabit LAN ports for fast and reliable wired connections.[^]

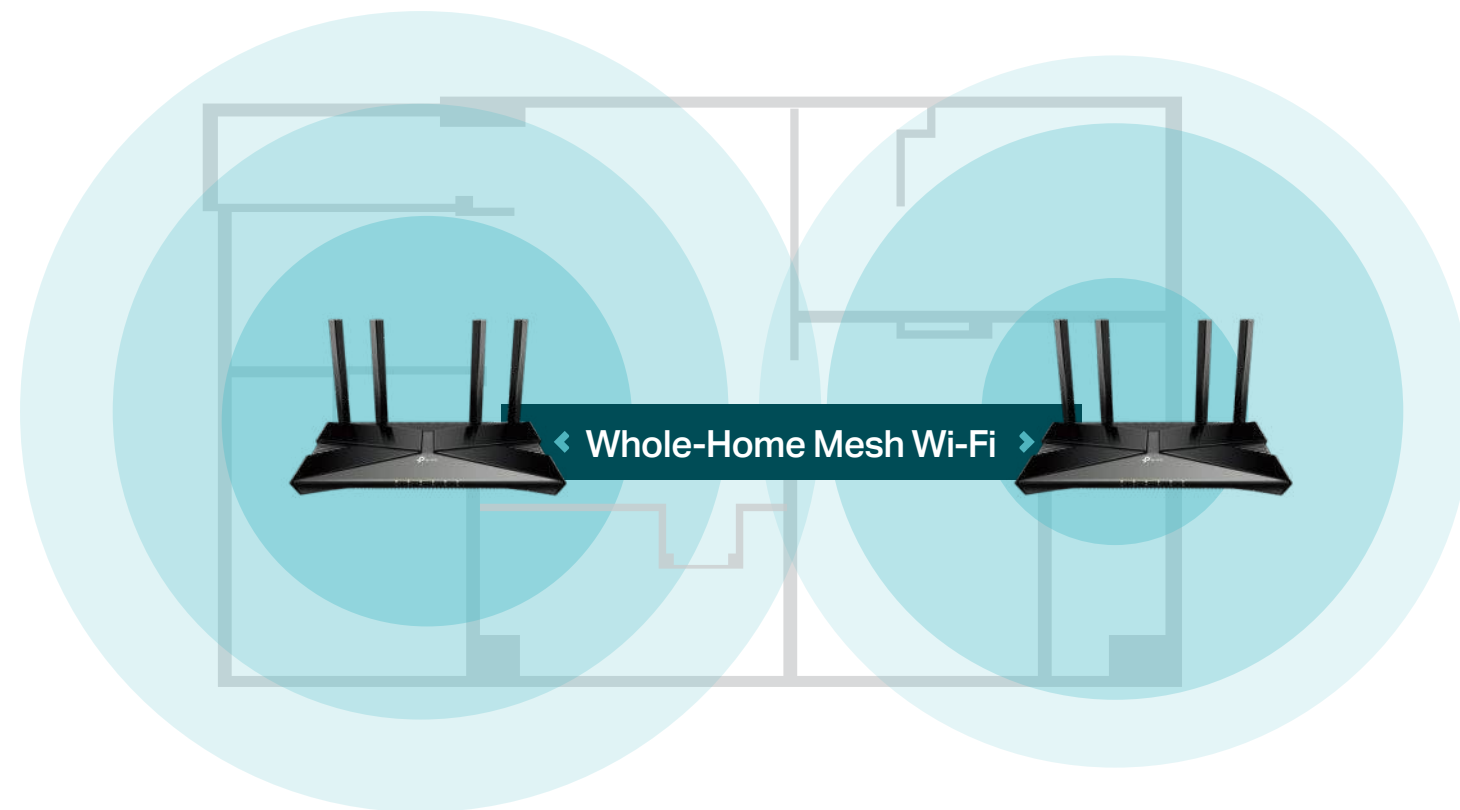


Gigabit Ports

Highlights

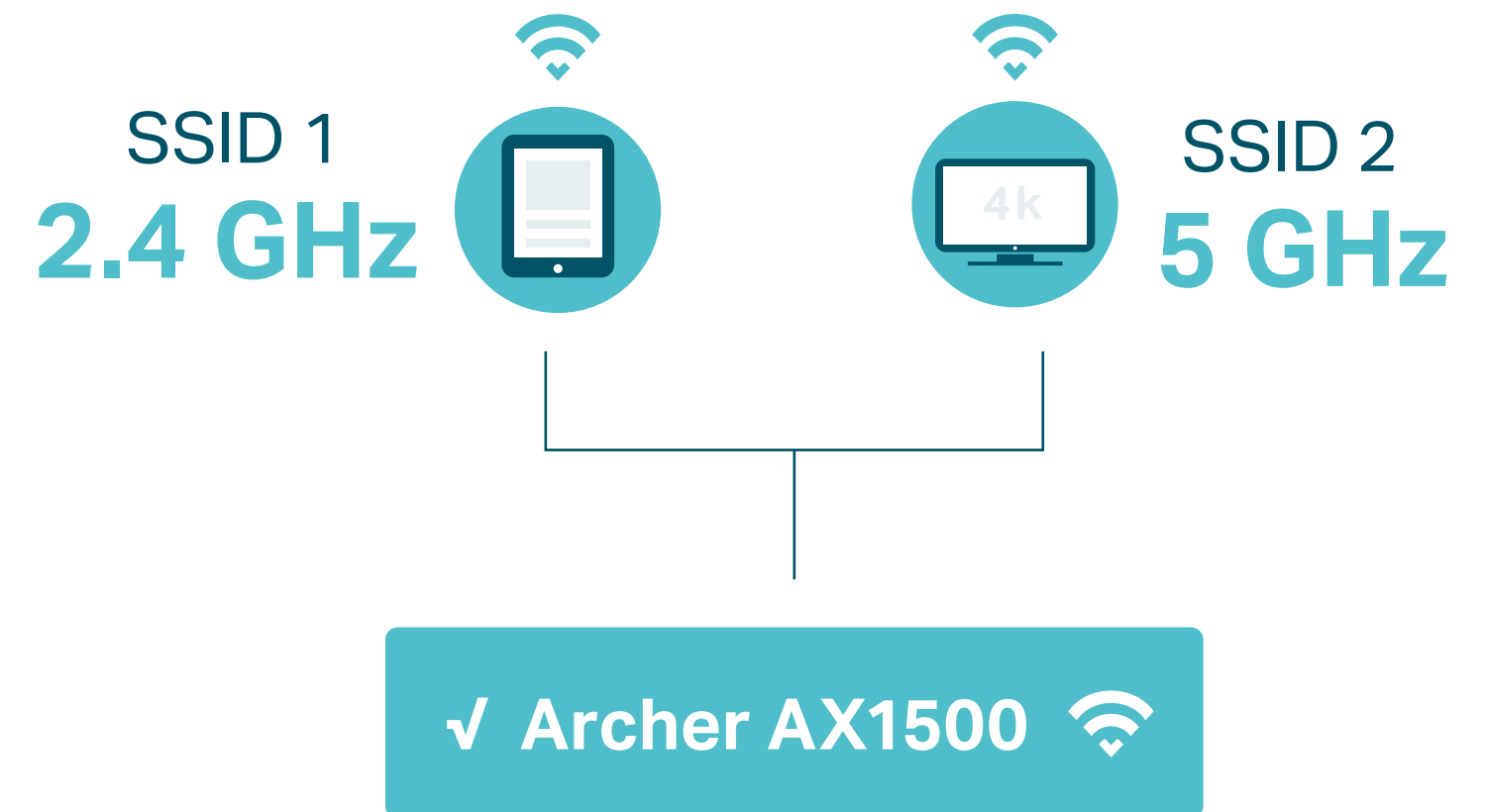
Flexible Whole-Home Wi-Fi

Four high-performance antennas and Beamforming deliver broad coverage. Furthermore, Archer AX1500 is compatible with EasyMesh to form seamless whole home mesh Wi-Fi, preventing drops and lag when moving between signals.**



Smart Connect

Archer AX1500 automatically assigns your devices to the best available band according to the Wi-Fi environment, balancing the network load to give each device its optimum connection.

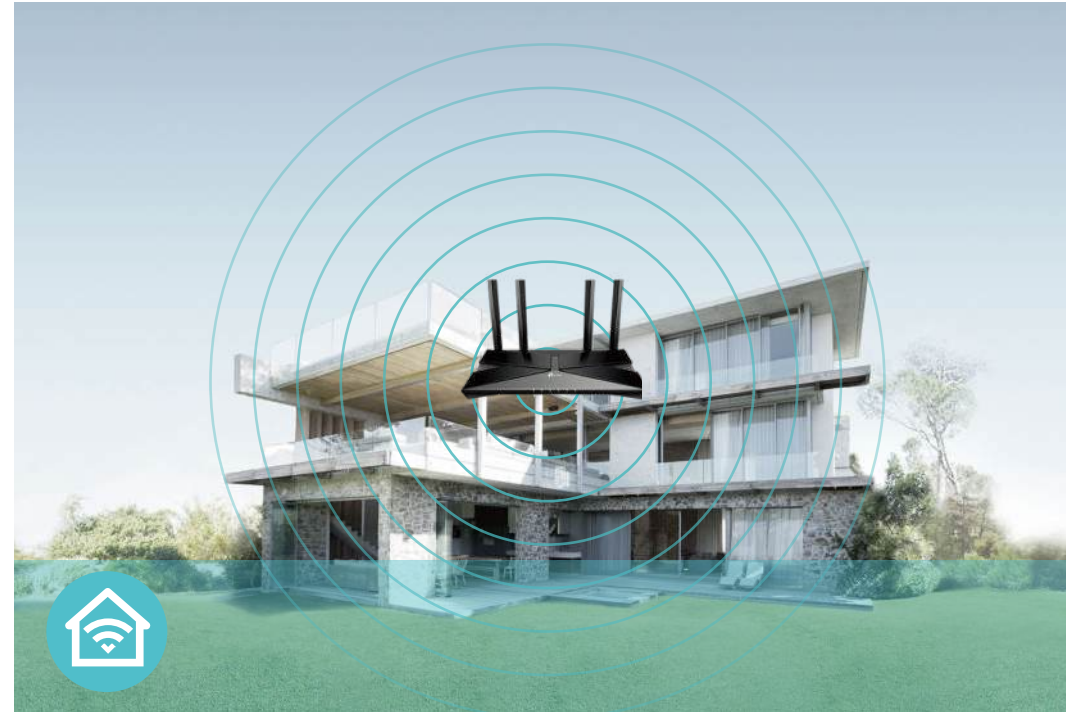


Features



Speed

- AX Tech – 802.11ax (also known as Wi-Fi 6) features advanced technologies including OFDMA and 1024QAM, drastically increasing the speed and efficiency of the entire network[‡]
- Ultimate Wireless Speed – 300 Mbps on 2.4 GHz (802.11n) + 1201 Mbps on 5 GHz (802.11ax)
- Gigabit Internet Access – Take full advantages of broadband speeds up to 1 Gbps[^]



Wi-Fi Range

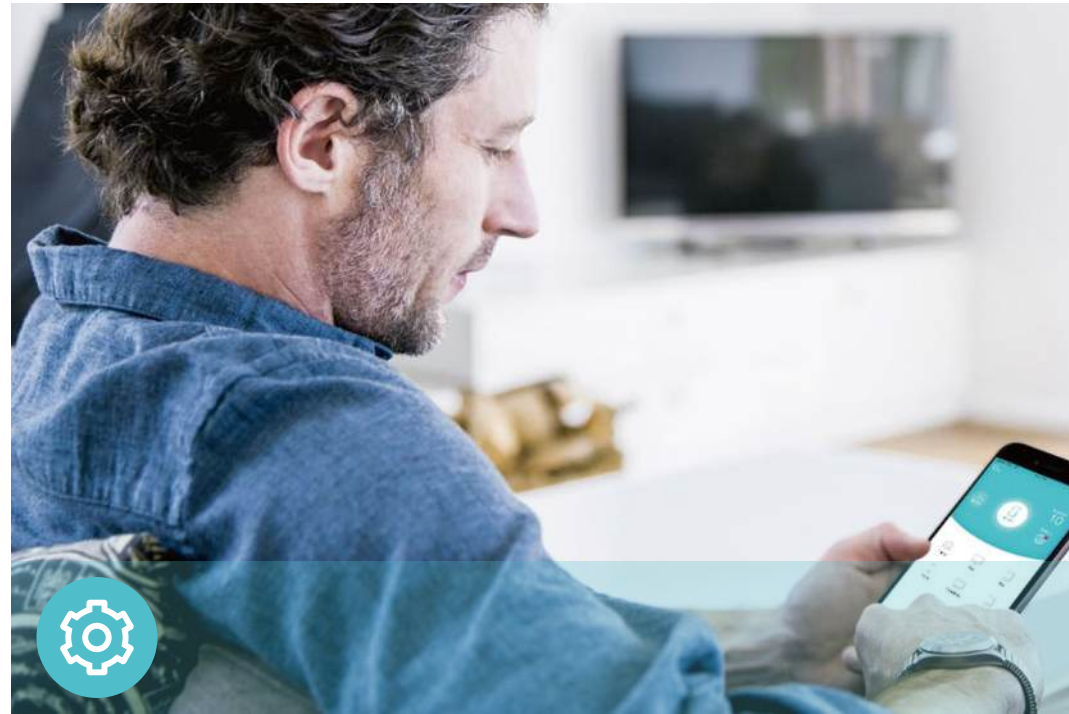
- Ultimate Range Wi-Fi – Four external antennas deliver a Wi-Fi signal to every corner of your home, making all of your connections more efficient and stable
- Beamforming Technology – Concentrates Wi-Fi signals towards individual devices to ensure stronger connections



Reliability

- VPN Clients and Server Supported – Archer AX1500 allows specified devices in your home network to access remote VPN servers without needing to install VPN software on every device
- Airtime Fairness – Balances bandwidth of connected devices to improve overall throughput and efficiency
- Smart Connect – Intelligently switches each device's connection to the optimum available Wi-Fi band
- Quality of Service – Prioritizes devices for optimum performance when needed

Features



Ease of Use

- Intuitive Web UI – Ensures quick and simple Installation without hassle
- Fast Encryption – One-touch WPA wireless security encryption with the WPS button
- Easy On/Off – Turn on/off wireless function using the Wi-Fi button
- Hassle-free Management with Tether App – Network management is made easy with the TP-Link Tether App, available on any Android and iOS device



Scan the QR code to download TP-Link Tether.



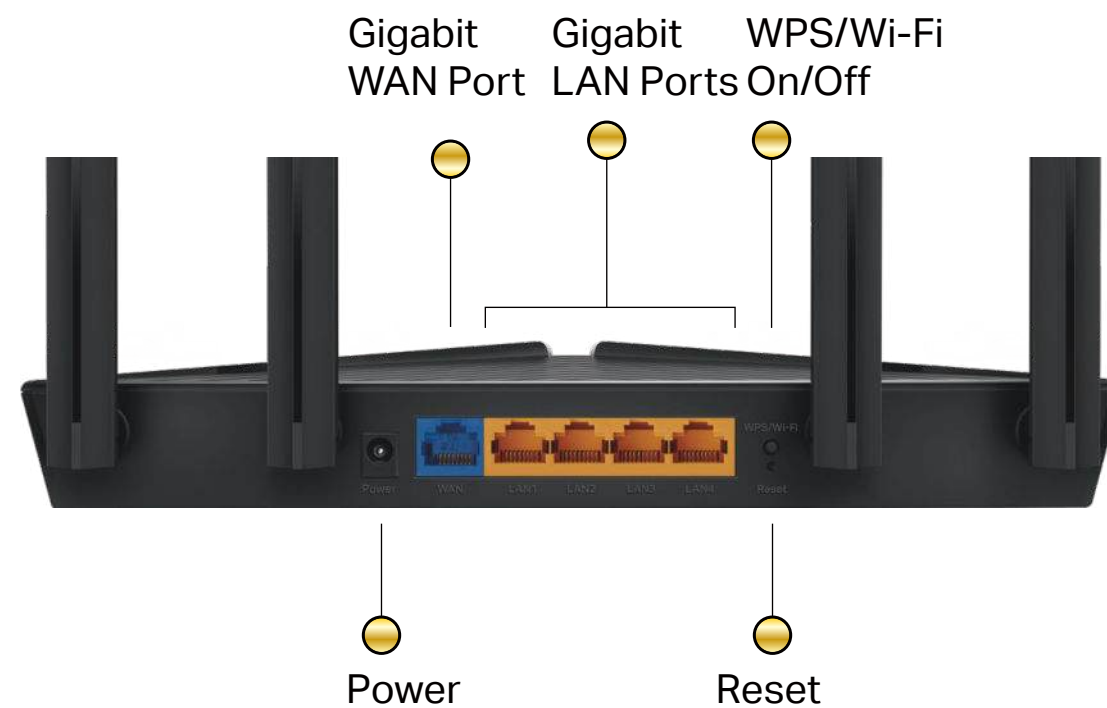
Security

- Guest Network – Keeps your main network secure by creating a separate network for friends and visitors
- Access Control – Establishes an allow list or a deny list to allow or restrict certain devices to access the internet
- Parental Controls – Restrict internet access time and contents for children devices
- WPA3 Security – The latest Wi-Fi security protocol, WPA3, brings new capabilities to improve cybersecurity. More secure encryption in Wi-Fi password safety and enhanced protection against brute-force attacks combine to safeguard your home Wi-Fi.†

Specifications

Hardware

- Ethernet Ports: One Gigabit WAN Port, four Gigabit LAN Ports
- Buttons: WPS/Wi-Fi Button, Reset Button
- Antennas: Four External Antennas
- Dimensions (W x D x H): 10.2 × 5.3 × 1.5 in (260.2 × 135.0 × 38.6 mm)



Wireless

- Wireless: 1201 Mbps (5 GHz, 11ax) + 300 Mbps (2.4 GHz, 11n), compatible with 11a/b/g/n/ac/ax Wi-Fi standards
- Frequency: 2.4 GHz and 5 GHz
- Transmit Power:
FCC:<30dBm(2.4G & 5.15GHz~5.25GHz & 5.735GHz ~5.835GHz)
- Reception Sensitivity:
5 GHz:
11ax HE20 MCS0:-95dBm
11ax HE20 MCS11:-63dBm
2.4 GHz:
11n HT20 MCS0:-95dBm
11n HT20 MCS7:-76dBm
- Wireless Function: Enable/Disable Wireless Radio, WMM
- Wireless Security: WPA, WPA2, WPA3, WPA/WPA2-Enterprise (802.1x) encryptions

Specifications

Software

- Quality of Service: Device Prioritisation
- WAN Type: Dynamic IP/Static IP/PPPoE/PPTP(Dual Access)/L2TP(Dual Access)
- Management: Access Control, Local Management, Remote Management
- DHCP: Server, DHCP Client List, Address Reservation
- Port Forwarding: Port Forwarding, Port Triggering, UPnP, DMZ
- Dynamic DNS: DynDns, NO-IP, TP-Link
- Access Control: Parental Controls, Local Management Control
- Firewall Security: SPI Firewall, IP and MAC Address Binding
- Protocols: IPv4, IPv6
- Guest Network: 2.4 GHz Guest Network, 5 GHz Guest Network
- VPN Client and Server: OpenVPN, PPTP, L2TP/IPSec, WireGuard

Others

- Certification:
FCC, RoHS
- System Requirements:
Edge, Firefox, Chrome, Safari, or other JavaScript-enabled browser
*You are recommended to use the latest version
Cable or DSL Modem
Subscription with an internet service provider (for internet access)
- Environment:
Operating Temperature: 0°C~40°C (32°F ~104°F)
Storage Temperature: -40°C~70°C (-40°F ~158°F)
Operating Humidity: 10%~90% non-condensing
Storage Humidity: 5%~90% non-condensing
- Package Contents
Wireless Router Archer AX1500
Power Adapter
RJ45 Ethernet Cable
Quick Installation Guide



For more information, please visit

https://www.tp-link.com/products/details/?model=Archer+AX1500_V3

or scan the QR code left

[†]Maximum wireless signal rates are the physical rates derived from IEEE Standard 802.11 specifications. Actual wireless data throughput, wireless coverage and number of connected devices are not guaranteed and will vary as a result of network conditions, client limitations, and environmental factors, including building materials, obstacles, volume and density of traffic, and client location.

[‡]Use of 802.11ax (Wi-Fi 6), and features including WPA3, OFDMA and 1024-QAM requires clients to also support corresponding features.

[§]The 802.11ax white paper defines standardized modifications to both the IEEE 802.11 physical layers (PHY) and the IEEE 802.11 Medium Access Control (MAC) layer as enabling at least one mode of operation capable of supporting improvement of at least four times the average throughput per station (measured at the MAC data service access point) in a dense deployment scenario.

[¶]1,000 Mbps internet speeds require compatible service plans and equipment.

^{*}30% less download time is a result of the 38% improvement in speed from Wi-Fi 5 5 GHz 2x2 to Wi-Fi 6 5 GHz 2x2.

^{**}This router may not support all the mandatory features as ratified in Draft 3.0 of IEEE 802.11ax specification.

^{***}Further software upgrades for feature availability may be required.

©2024 TP-Link