





# AX3000 Gigabit Wi-Fi 6 Router

Faster. Broader. Unstoppable.




Archer AX55

 Super-Fast Wi-Fi  
up to 3.0 Gbps<sup>†</sup>

 Broad Coverage with  
4 High-Performance Antennas

 Connect More Devices  
with OFDMA<sup>†</sup>

 Easy Sharing with  
a USB 3.0 Port

# Highlights

## **Wi-Fi 6** Faster. Broader. Unstoppable.

The Archer AX55, based on the next generation 802.11ax Wi-Fi technology, takes your Wi-Fi to the next level while being backwards compatible with 802.11a/b/g/n/ac Wi-Fi standards.



### Super Fast Wi-Fi

Enjoy full access to 8K streaming and high-speed downloading with HE160 on the 5 GHz band providing doubled bandwidth.†



### Connect Numerous Devices

Allow more applications to run at the same time. OFDMA transmits data to multiple devices simultaneously across 4 streams, drastically reducing latency.‡



### Smart Power Saving

Conserve the power of your mobile devices by scheduling the connection time of battery-powered devices with Target Wake Time.‡



### Backwards Compatible

Take your Wi-Fi to the next level while being backwards compatible with 802.11a/b/g/n/ac Wi-Fi standards.

## TP-Link HomeShield

TP-Link's premium security services keep your home network safe with cutting-edge features for network and IoT protection.▲



### Network Protection

Detect cyber threats to keep your privacy and connected devices well protected.



### Quality of Service (QoS)

Prioritize your bandwidth needs to get a better networking experience.



### Parental Controls

Manage online time and block inappropriate content to keep families healthy online.



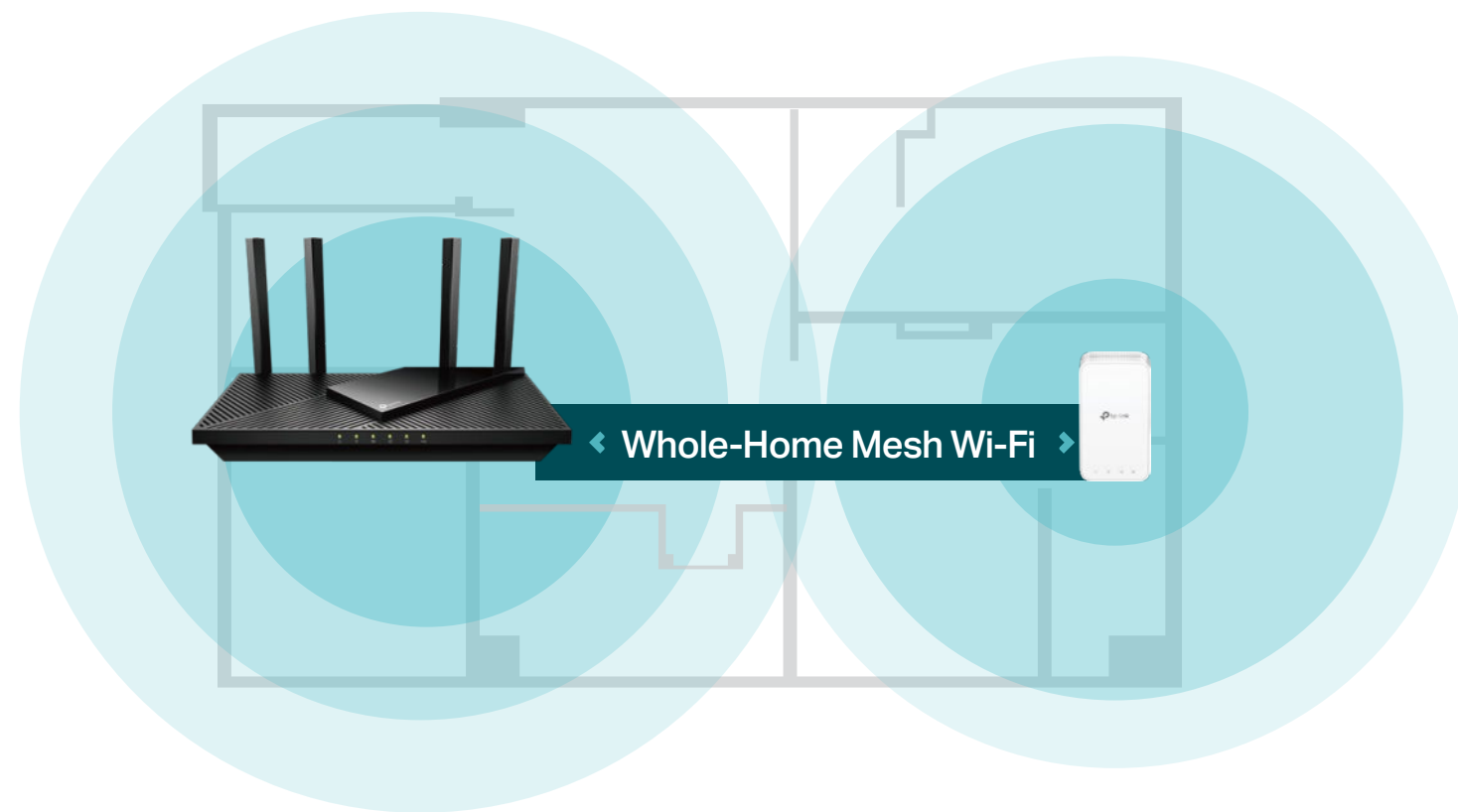
### Comprehensive Reports

Gain full statistics and insights to help you know your home network better.

# Highlights

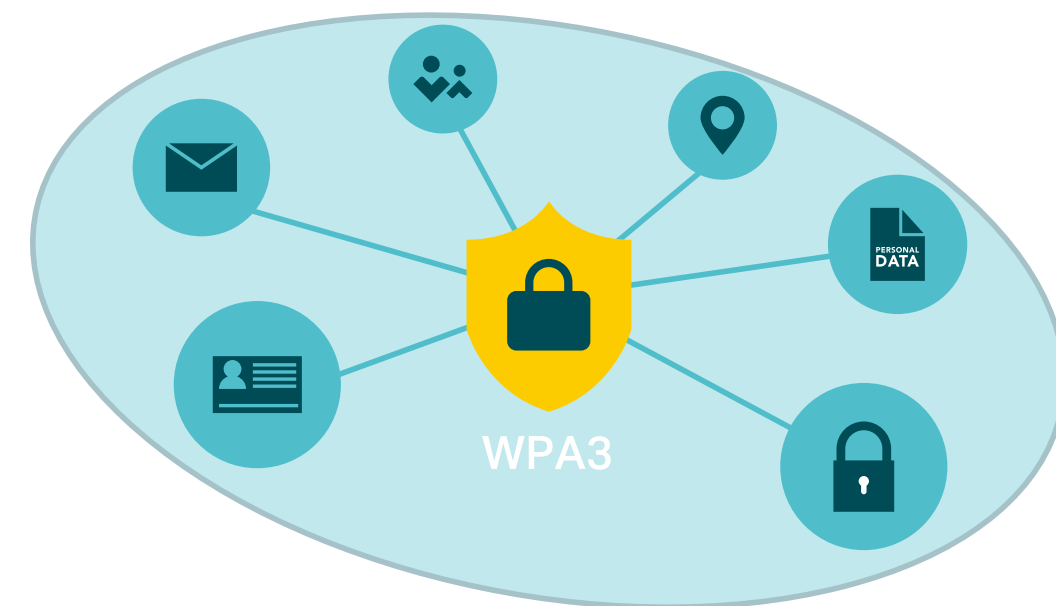
## Flexible Whole-Home Wi-Fi

Four high-performance antennas and Beamforming deliver broad coverage. Furthermore, Archer AX55 is compatible with EasyMesh to form seamless whole home mesh Wi-Fi, preventing drops and lag when moving between signals.\*\*



## WPA3 Security

The latest Wi-Fi security protocol, WPA3, brings new capabilities to improve cybersecurity. More secure encryption in Wi-Fi password safety and enhanced protection against brute-force attacks combine to safeguard your home Wi-Fi.\*

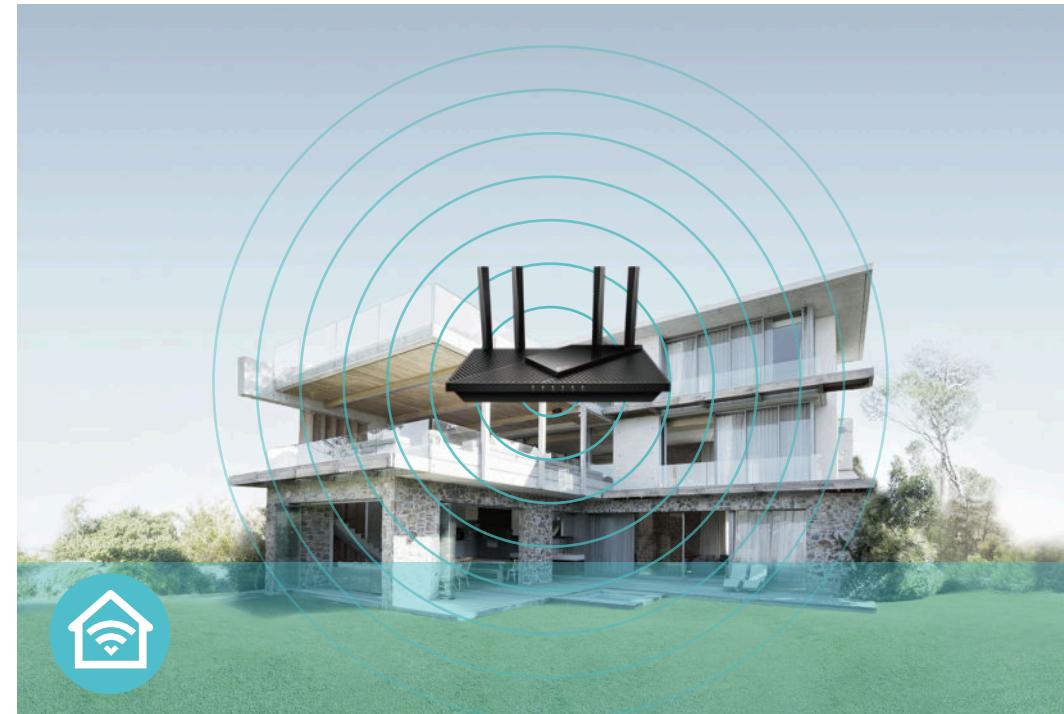


# Features



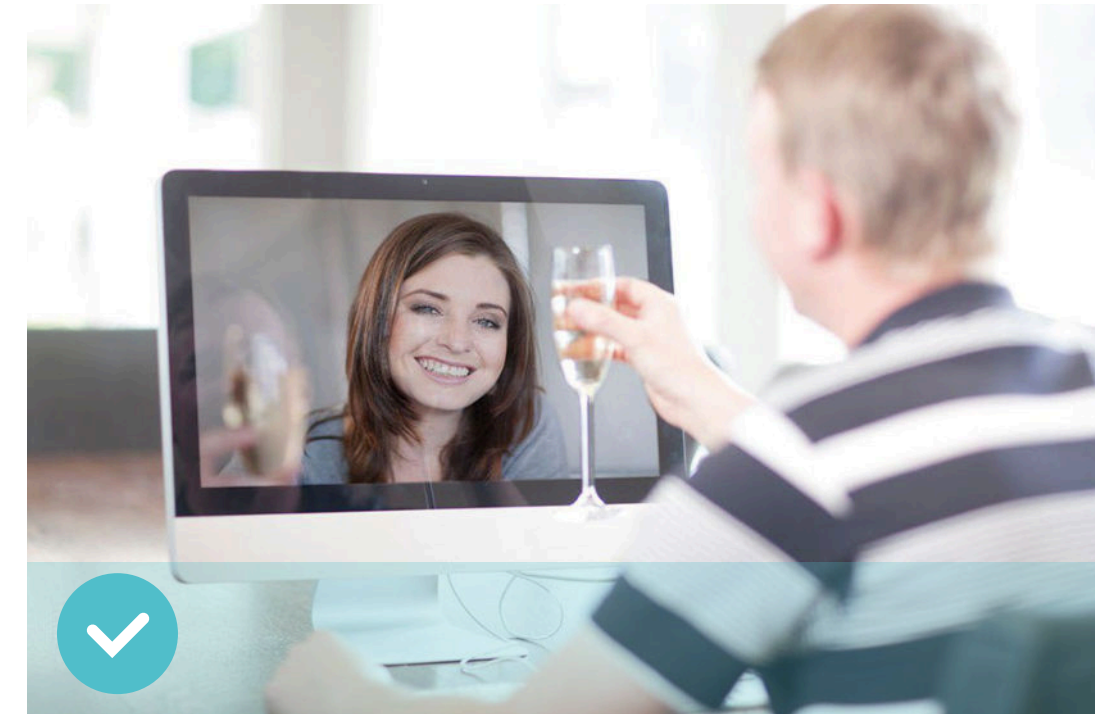
## Speed

- Super-Fast Wi-Fi – 3 Gbps Wi-Fi for faster browsing, streaming, and downloading—all at the same time†
- Connect More, Stay Fast – The new Wi-Fi 6 standard reduces congestion and quadruples your average throughput<sup>§</sup>



## Wi-Fi Range

- Ultimate Range Wi-Fi – Four high-gain external antennas deliver a Wi-Fi signal to every corner of your home, making all of your connections more efficient and stable
- Beamforming Technology – Concentrates Wi-Fi signals towards individual devices to ensure stronger connections
- Seamless EasyMesh network – Transfer between signals without any drops or lag and manage your whole network using a centralized panel



## Reliability

- Secure VPN Access – OpenVPN/PPTP/L2TP/WireGuard VPN Server and VPN Client are supported
- Airtime Fairness – Balances bandwidth of connected devices to improve overall throughput and efficiency
- Smart Connect – Intelligently assigns each device to the best Wi-Fi band for optimal performance

# Features



## Ease of Use

- Intuitive Web UI – Ensures quick and simple installation without hassle
- WPS (Wi-Fi Protected Setup) – Help you to quickly and securely connect your devices to the router's network with a tap
- Power On/Off – Conveniently power on or off your router as required
- Hassle-free Management with Tether App – Network management is made easy with the TP-Link Tether app, available on any Android and iOS device

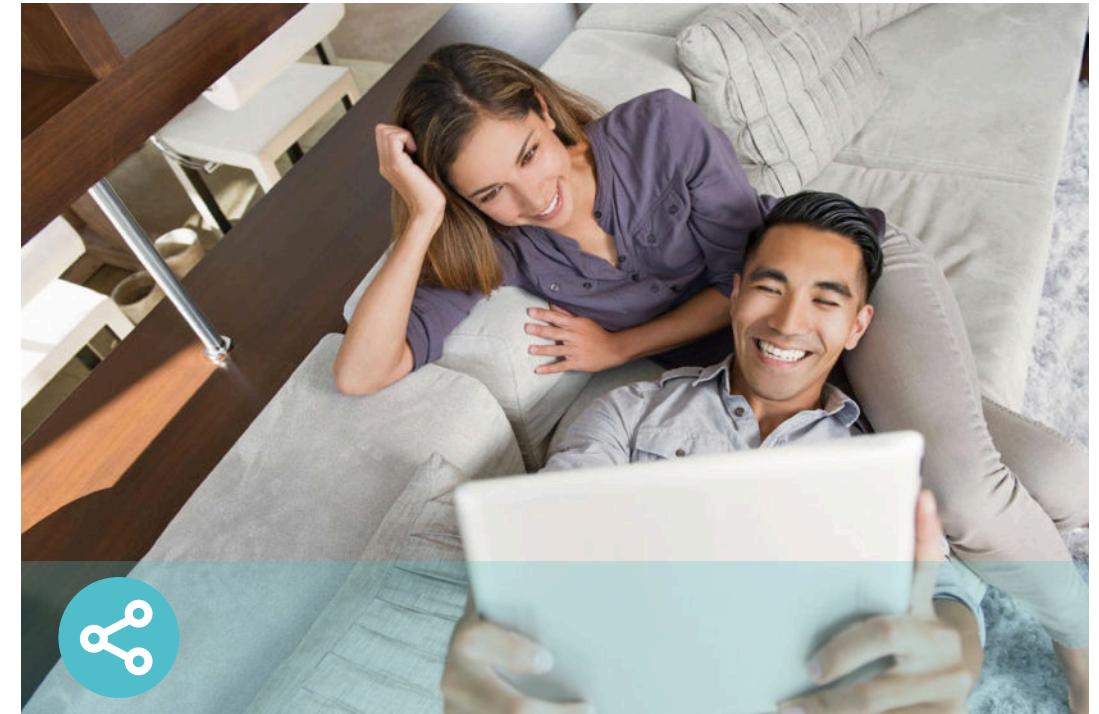


Scan the QR code to download TP-Link Tether.



## Security

- HomeShield – TP-Link's premium security services keep your home network safe with cutting-edge features for network and IoT protection
- Guest Network – Provides separate access for guests to secure the home network
- Access Control – Establishes an allow list or a deny list to allow or restrict certain devices to access the internet
- WPA3 – The latest encryption technology eliminates brute-force attacks and provides better security\*



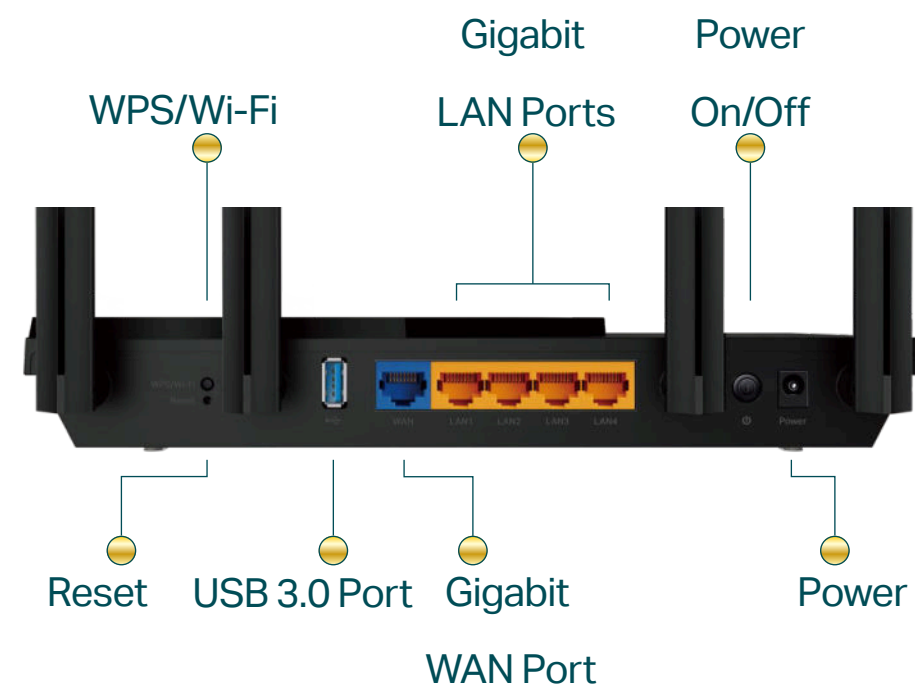
## Easy Sharing

- USB Port – Connects external storage devices to rapidly share files, photos, and videos
- Built-in Media Server – Allows you to play music, watch videos and view photos from any device on your network

# Specifications

## Hardware

- Antennas: 4× High-Performance Antennas
- Ethernet Ports:  
1× Gigabit WAN Port + 4 × Gigabit LAN Ports
- USB Ports: 1× USB 3.0 Port
- Dimensions: 10.2 × 5.3 × 1.5 in (261 × 134.5 × 41 mm)



## Wireless

- Wireless: 2402 Mbps (5 GHz) + 574 Mbps (2.4 GHz), compatible with 11a/b/g/n/ac Wi-Fi standards
- Frequency: 2.4 GHz and 5 GHz
- Transmit Power:  
FCC: <30dBm (2.4GHz & 5.15GHz~5.25GHz&5.725GHz~5.825GHz)
- Reception Sensitivity:  
2.4GHz:  
11ac VHT20\_MCS0:-96dBm, 11ac VHT20\_MCS8:-74dB  
11ac VHT40\_MCS0:-94dBm, 11ac VHT40\_MCS9:-70dB  
11ax HE20\_MCS0:-96dBm, 11ax HE20\_MCS11:-66dBm  
11ax HE40\_MCS0:-93dBm, 11ax HE40\_MCS11:-63dBm  
5GHz:  
11ac VHT20\_MCS0:-96dBm, 11ac VHT20\_MCS8:-75dBm  
11ac VHT40\_MCS0:-94dBm, 11ac VHT40\_MCS9:-70dBm  
11ac VHT80\_MCS0:-91dBm, 11ac VHT80\_MCS9:-67dBm  
11ac VHT160\_MCS0:-88dBm, 11ac VHT160\_MCS9:-63dBm  
11ax HE20\_MCS0:-96dBm, 11ax HE20\_MCS11:-66dBm  
11ax HE40\_MCS0:-93dBm, 11ax HE40\_MCS11:-63dBm  
11ax HE80\_MCS0:-91dBm, 11ax HE80\_MCS11:-61dBm  
11ax HE160\_MCS0:-87dBm, 11ax HE160\_MCS11:-58dBm
- Wireless Function: Enable/Disable Wireless Radio, WMM, Wireless Statistics
- Wireless Security: WPA/WPA2-Personal, WPA2/WPA3-Personal, WPA/WPA2-Enterprise

# Specifications

## Software

- Protocols: IPv4, IPv6
- Service Kits: HomeShield
- EasyMesh: Supported
- Parental Controls: HomeShield Parental Controls
- WAN Types: Dynamic IP, Static IP, PPPoE, PPTP, L2TP
- Quality of Service: QoS by Device
- Cloud Service: Auto Firmware Upgrade, TP-Link ID, DDNS
- NAT Forwarding: Port Forwarding, Port Triggering, DMZ, UPnP
- DDNS: TP-Link, NO-IP, DynDNS
- VPN: OpenVPN/PPTP/L2TP/WireGuard VPN Server &VPN Client

## Others

- Certification:  
FCC, RoHS
- System Requirements:  
Edge, Firefox, Chrome, Safari, or other JavaScript-enabled browser  
\*You are recommended to use the latest version  
  
Cable or DSL Modem (if needed)  
  
Subscription with an internet service provider (for internet access)
- Environment:  
Operating Temperature: 0°C~40°C (32°F ~104°F)  
Operating Humidity: 10%~90% non-condensing
- Package Contents  
Wireless Router Archer AX55  
  
Power Adapter  
  
RJ45 Ethernet Cable  
  
Quick Installation Guide



For more information, please visit

[https://www.tp-link.com/products/details/?model=Archer+AX55\\_V4](https://www.tp-link.com/products/details/?model=Archer+AX55_V4)

or scan the QR code left

<sup>1</sup>Maximum wireless signal rates are the physical rates derived from IEEE Standard 802.11 specifications. Actual wireless data throughput, wireless coverage and number of connected devices are not guaranteed and will vary as a result of network conditions, client limitations, and environmental factors, including building materials, obstacles, volume and density of traffic, and client location.

<sup>4</sup>Use of 802.11ax (Wi-Fi 6) and its features including OFDMA, HE160, and TWT requires clients to also support corresponding features. The 160 MHz bandwidth may be unavailable in the 5 GHz band in some regions/countries due to regulatory restrictions. Actual power reduction by Target Wake Time may vary as a result of network conditions, client limitations, and environmental factors.

<sup>5</sup>The 802.11ax white paper defines standardized modifications to both the IEEE 802.11 physical layers (PHY) and the IEEE 802.11 Medium Access Control (MAC) layer as enabling at least one mode of operation capable of supporting improvement of at least four times the average throughput per station (measured at the MAC data service access point) in a dense deployment scenario.

<sup>4</sup>HomeShield includes the Free Basic Plan. Fees apply for the Pro Plan. Visit <https://www.tp-link.com/homeshield> for more information

<sup>4</sup>Use of WPA3 requires clients to support WPA3.

<sup>\*\*</sup>TP-Link EasyMesh-compatible products can network with other devices that use EasyMesh. Failed connections may be due to firmware conflicts of different vendors. The EasyMesh-compatible function is still being developed on some models and will be supported in subsequent software updates.

Actual network speed may be limited by the rate of the product's Ethernet WAN or LAN port, the rate supported by the network cable, Internet service provider factors and other environmental conditions.

This router may not support all the mandatory features as ratified in IEEE 802.11ax specification.

Further software upgrade for feature availability may be required.

©2023 TP-Link